



# Dover Plains Pedestrian Plan

Town Board Presentation

April 26, 2023

# Dutchess County Transportation Council (DCTC)



- Housed in the County Planning Department
- 3 main products:
  1. Long-range transportation plan
  2. Capital program (federal transportation funds)
  3. Transportation planning: county-wide & for municipalities
- Pedestrian Plans:
  - Rhinebeck, Hyde Park, Pine Plains, Arlington (Poughkeepsie), Millerton, Pawling, Dover Plains!



# Town Resolution & Plan Scope

Town requested planning support from DCTC to:

1. Improve pedestrian access between Dover Plains and key destinations
2. Improve pedestrian safety, reliability, and equity in the hamlet, particularly along and across Mill St and Route 22
3. Encourage local economic development by supporting local businesses and attracting new businesses.



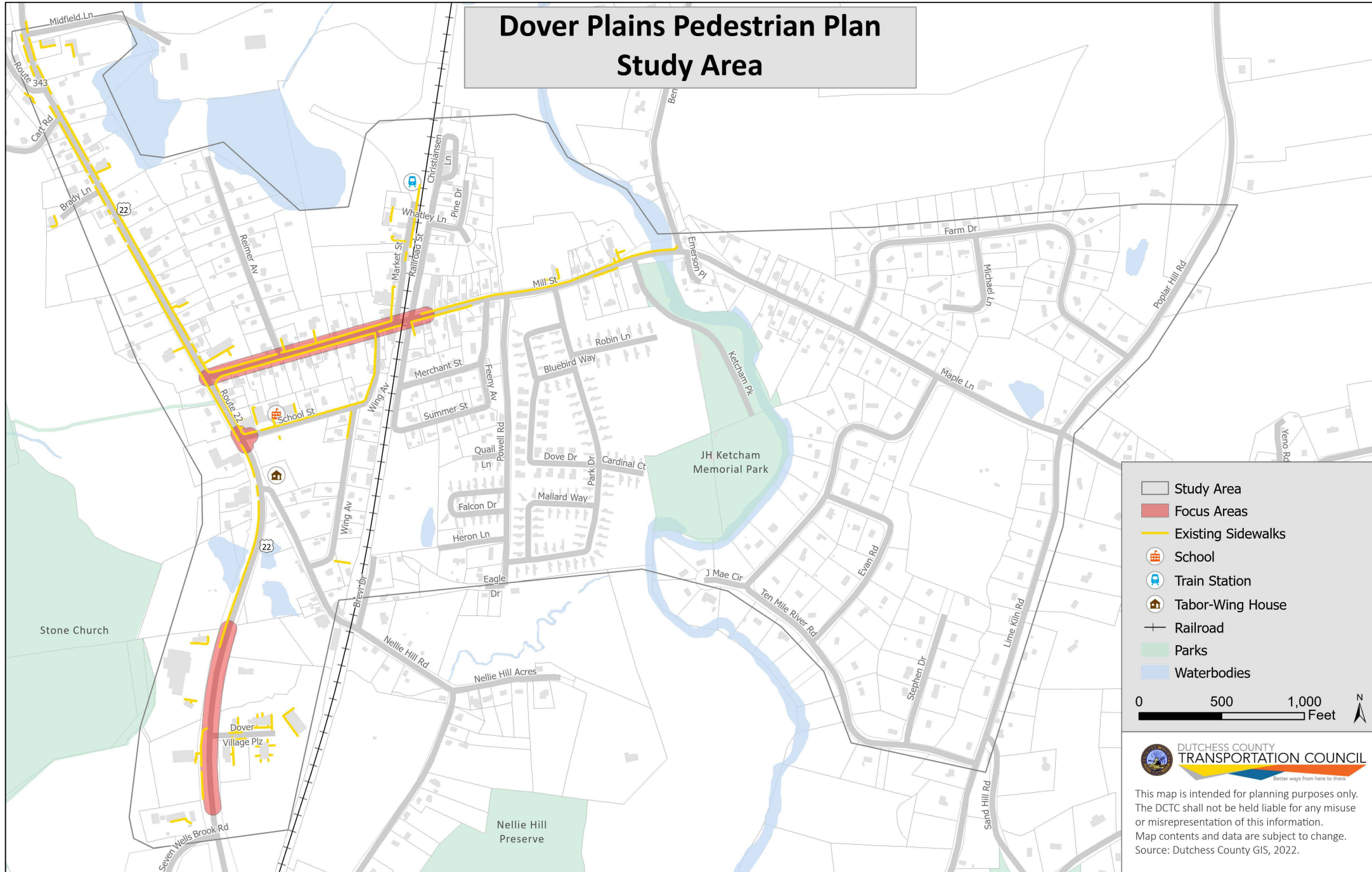
# Local Task Force



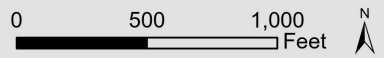
Meetings in March, June, August, October, & January (2023)

- Town Supervisor
- Town Clerk
- Highway Superintendent
- Fire Department
- School Superintendent
- Local business owners
- Community organization reps
- Residents

# Dover Plains Pedestrian Plan Study Area



- Study Area
- Focus Areas
- Existing Sidewalks
- Ⓜ School
- 🚉 Train Station
- 🏠 Tabor-Wing House
- Railroad
- Parks
- Waterbodies



This map is intended for planning purposes only. The DCTC shall not be held liable for any misuse or misrepresentation of this information. Map contents and data are subject to change. Source: Dutchess County GIS, 2022.

# Dover Day Outreach

## Top 5 public priorities (votes):

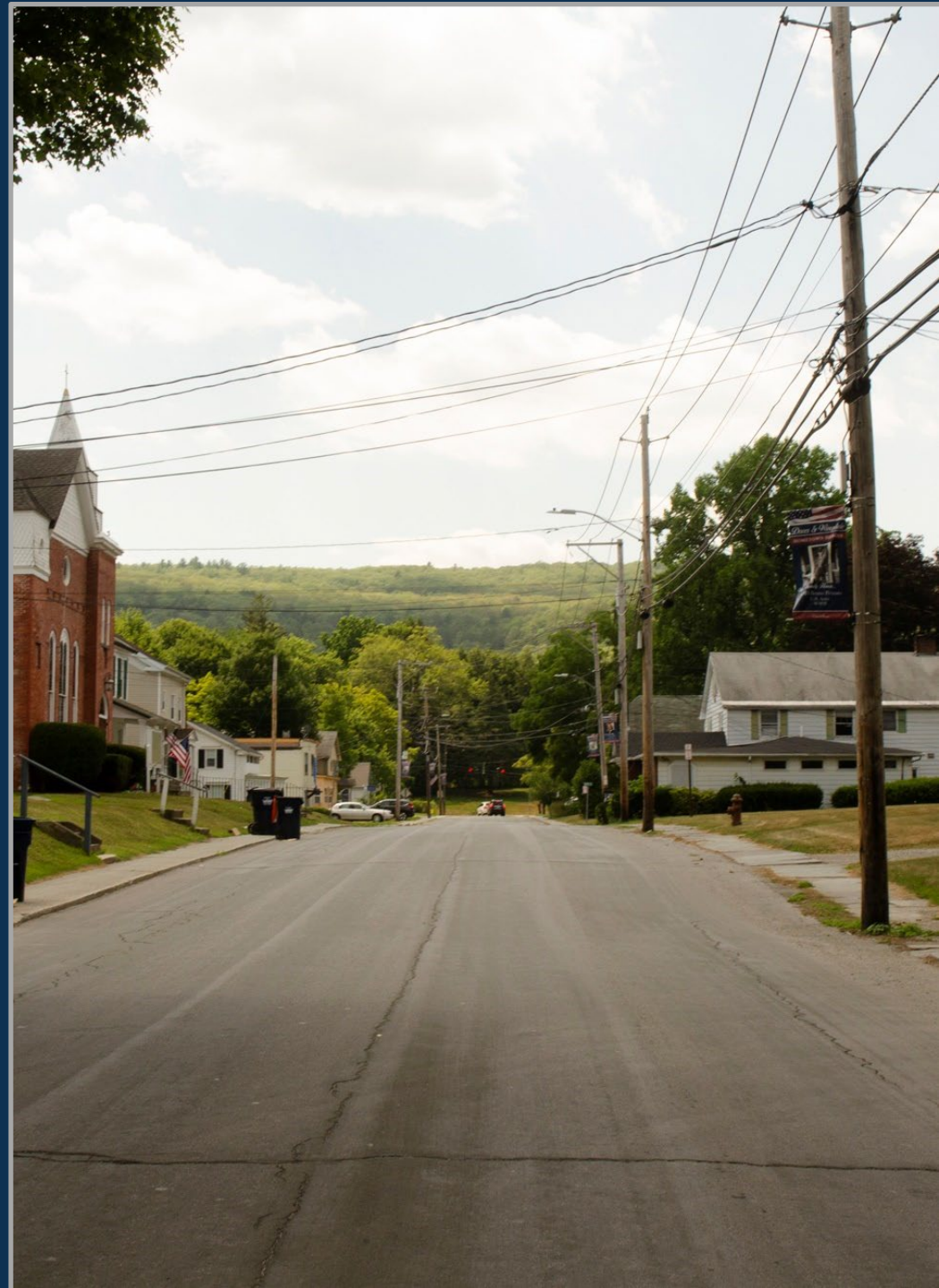
1. School St/Route 22 crosswalk improvements (36)
2. Ketcham Park sidewalk, crosswalk, & signage (27)
3. Route 22/Mill St crossing improvements (24)
4. Hamlet-Wide improvements - wayfinding signage, street trees, street furniture, infill development (21)
5. CVS Plaza sidewalk to Dollar General (20)



# Priority Recommendations

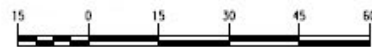
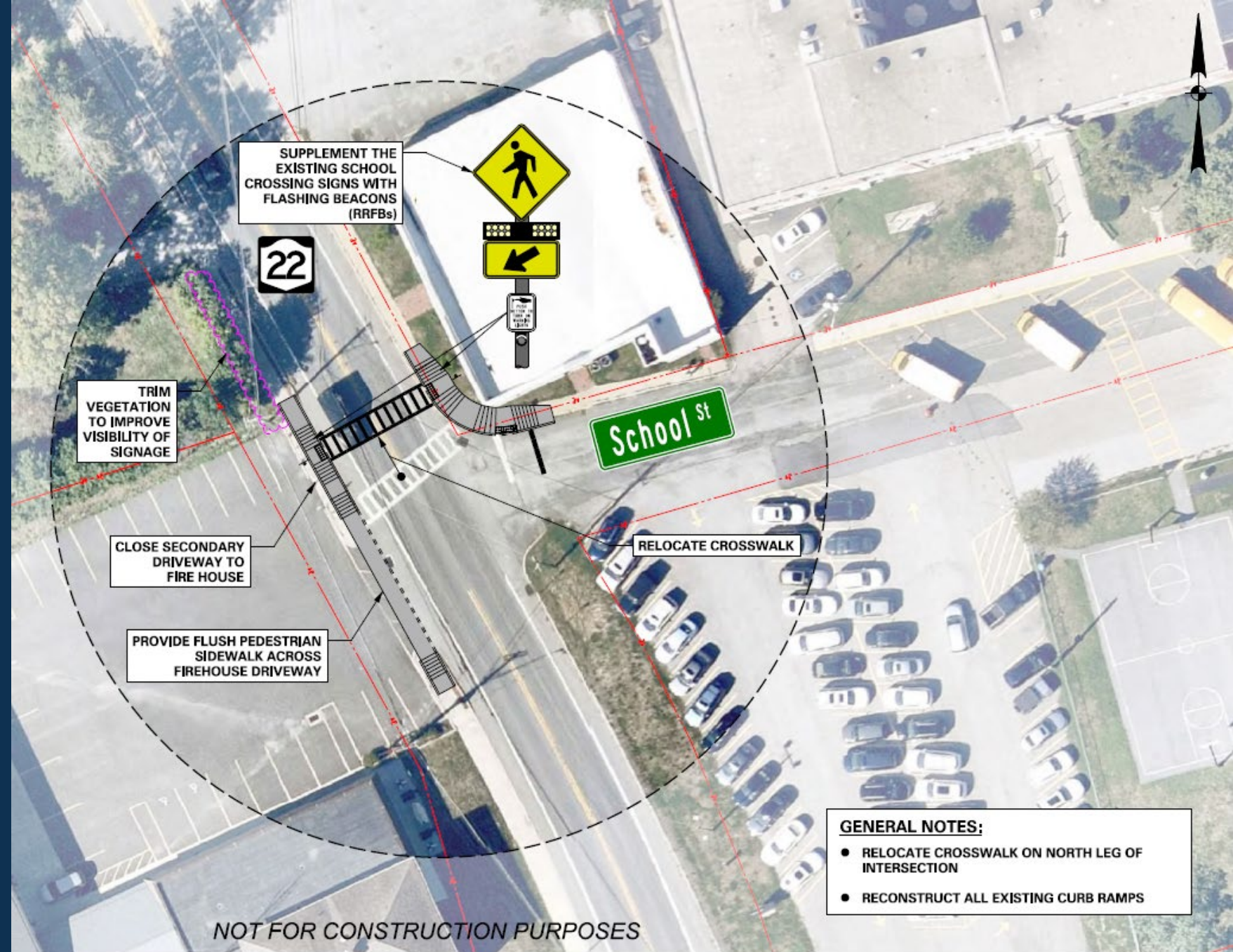
Developed via:

- DCTC data & input
- Task Force discussions
- NYSDOT calls and meetings
- Metro-North coordination
- Dover Day feedback
- DCTC Consultant detailed analysis

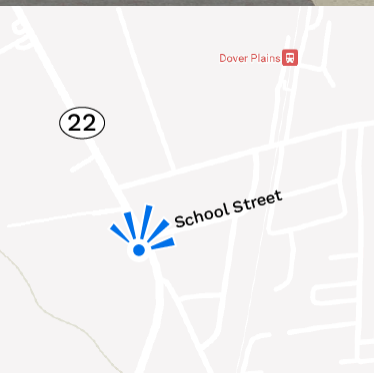


# Route 22/ School St

- Adjust crosswalk location
- Close northern fire house driveway
- Install flashing beacons
- Provide curb ramps







# Route 22/ Mill St

- Add crosswalk on south leg
- Construct curb extensions on Mill St; shorten crosswalk
- No Right Turn on Red westbound
- Upgrade curb ramps





# Mill Street

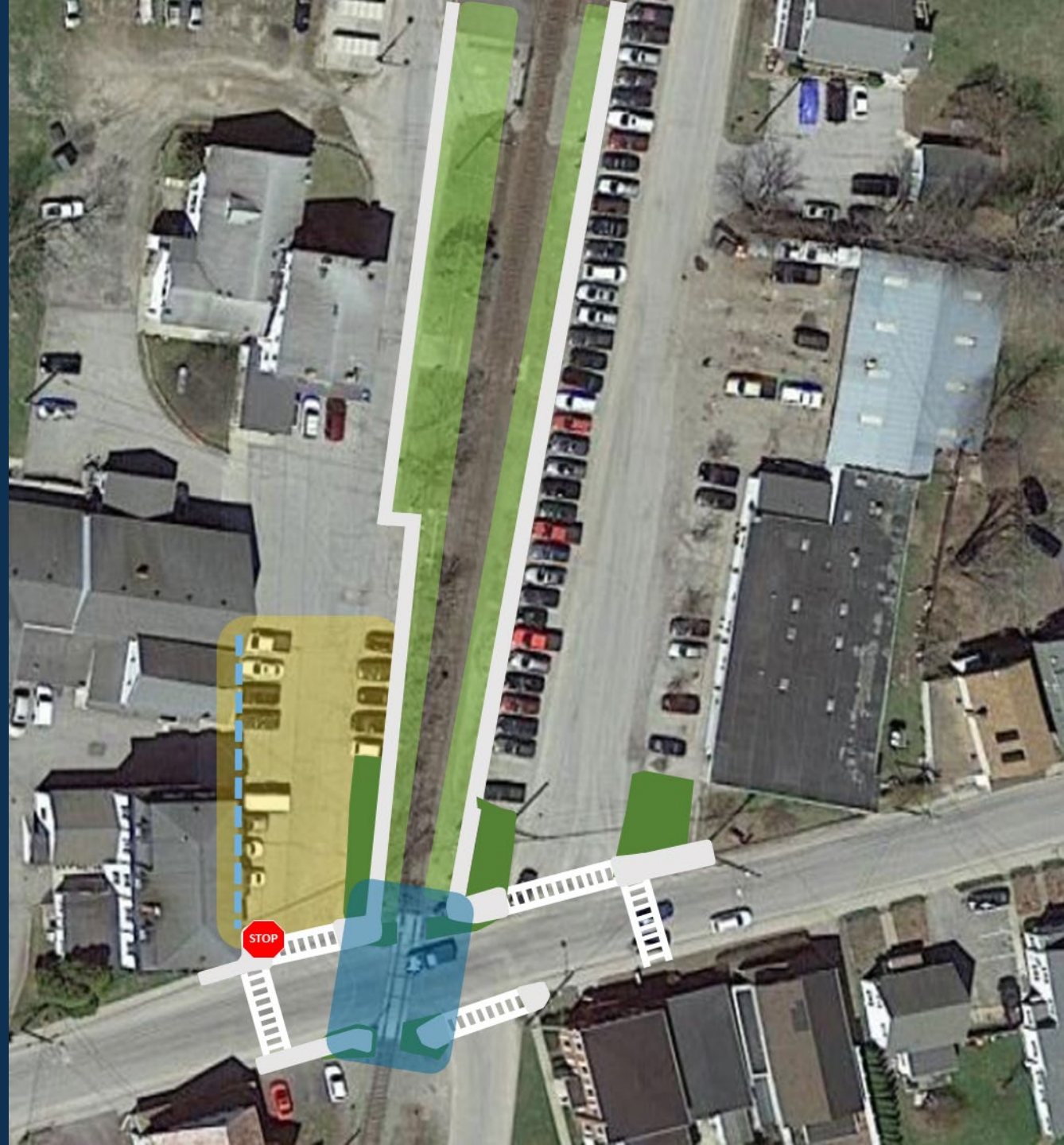
- Stripe a centerline to visually narrow the street & calm traffic



*Simple pavement markings in the Town of Poughkeepsie help slow speeds (source: Google maps).*

# Train Station Area

- Install sidewalks: east side of Market St; west side of Railroad St
- Clarify parking on Market St (markings/signage/curb stops)
- Aesthetic improvements
  - Fencing, plantings, etc
- Upgrade rail crossings
  - MTA projects – in development
- Upgrade crosswalks and curbing at Mill St



# Ketcham Park



- Install a large, clear sign; reduce sign clutter (improved)

- Fill the sidewalk gap on Mill St; add a curb ramp
- Mark a crosswalk across Mill St
- Pave driveway; construct a sidewalk



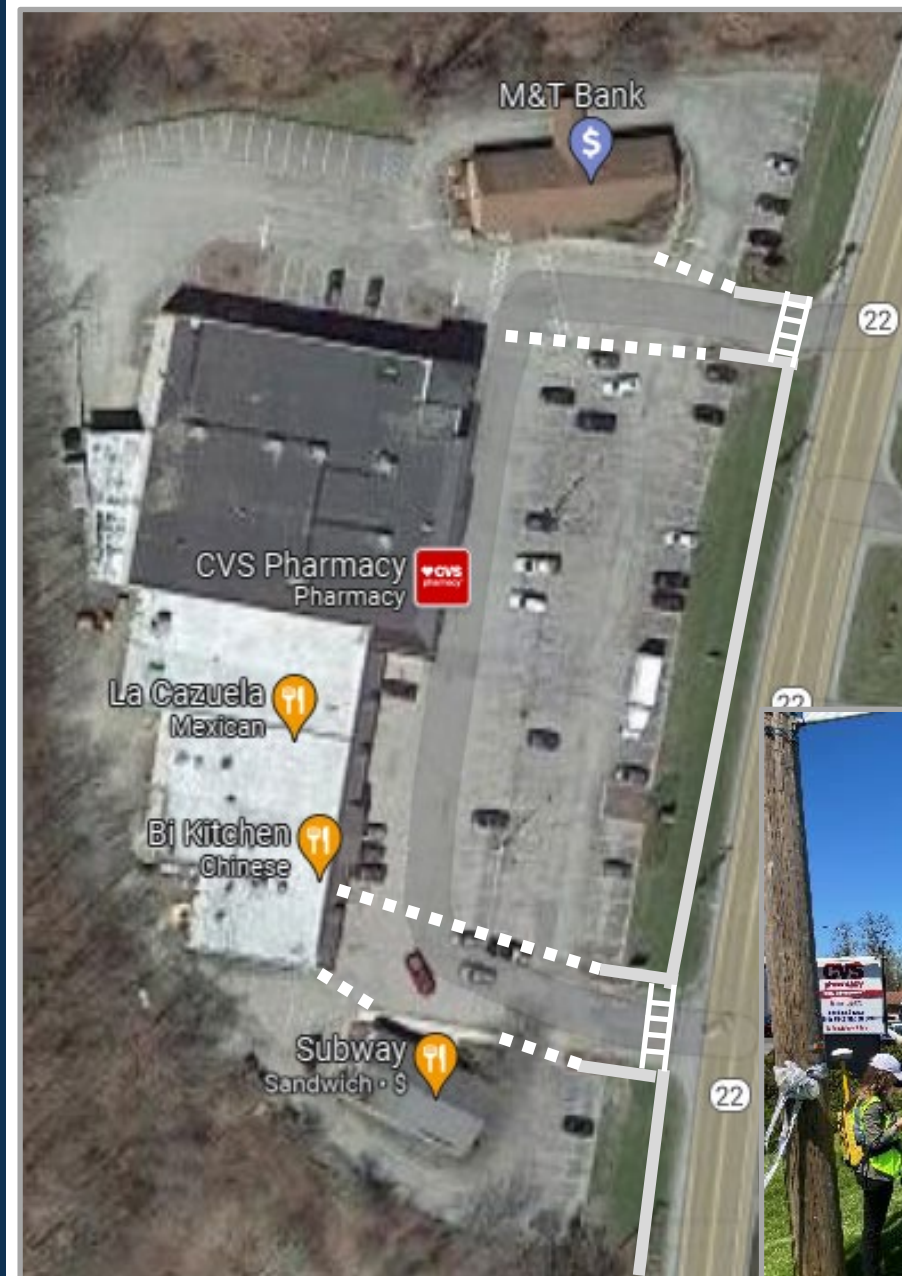
# Maple Lane

- Stripe a centerline to visually narrow the street
- Install a portable speed feedback device (purchased)
- Consider speed tables to slow speeds
  - Could try removable (rubber) ones first



# CVS Plaza

- Extend sidewalk to Dollar General
- Construct/mark walkways to store entrances from sidewalk and parking areas
- Improve northbound driveway signage





## Dover Plains Pedestrian Plan: Recommendations Summary

ID #	Recommendation	Phase	Priority?	Lead Entity	Partners	Reference (see also Map 14 for Infrastructure Recommendations)
<b>1. Route 22/School St</b>						
1.a	Add flashing beacons & curb extensions at the intersection	1 to 2	Y	Town	NYS DOT	Rendering 1 - Route 22/School St; Appendix F - NYS DOT meeting notes; Appendix I - Curb Extension Notes
1.b	Upgrade the School St playground crosswalk: curb ramp, striping, signs	1		Town	School District	
<b>2. Route 22/Mill St</b>						
2.a	Add curb extensions and a crosswalk at the intersection	2	Y	Town	NYS DOT	Rendering 2 - Route 22/Mill St; Appendix F - NYS DOT meeting notes; Appendix I - Curb Extension Notes
<b>3. Mill St Corridor</b>						
3.a	Stripe a centerline	1	Y	Town		
3.b	Use a speed feedback device	1		Town		
3.c	Review and revise on-street parking	1		Town	Churches	Map 15 - Parking Restrictions
3.d	Narrow wide intersections (Powell Rd, Park Dr)	1 to 2		Town	Park Dr mobile home park	
3.e	Widen sidewalks	2 to 3		Town	Adjacent property owners	Map 6 - Sidewalk Width
3.f	Consider a south sidewalk on the Mill St Bridge	3		Town	County DPW	
<b>4. Train Station Area</b>						
4.a	Mark crosswalks and refresh Railroad Crossing markings	1	Y	Town	MTA	Appendix G - MTA call notes
4.b	Clarify parking on Market St: curb stops, striped spaces, signs	1		Town	MTA; other property owners	Appendix G - MTA call notes
4.c	Improve station area aesthetics: fencing, landscaping, lighting, curbing; extend Mill St sidewalk to Railroad St; add STOP sign on southbound Market St	1 to 2	Y	Town/MTA	MTA	Appendix G - MTA call notes
4.d	Encourage Transit Oriented Development	1		Town		Route 22 Opportunities Analysis report
4.e	Add sidewalks on Market St & Railroad St	2	Y	Town	MTA	Appendix G - MTA call notes
<b>5. Ketcham Park</b>						
5.a	Improve signage to Ketcham Park	1	Y	Town		
5.b	Improve pedestrian access to Ketcham Park: pave driveway, add sidewalk & crosswalks	2	Y	Town	Fire Company	



# Next Steps

- DCTC to submit the final Plan & files to the Town
- Town should formally adopt the Plan (helps with grants)
- Town to pursue grants; implement recommendations
- Town to continue coordinating with NYSDOT & MTA/Metro-North

Thank you!

## Dutchess County Transportation Council

85 Civic Center Plaza, Suite 107

Poughkeepsie, NY 12601

(845) 486-3600

[dctc@dutchessny.gov](mailto:dctc@dutchessny.gov)

[www.dutchessny.gov/DoverPlainsPedestrianPlan](http://www.dutchessny.gov/DoverPlainsPedestrianPlan)

### Staff

Mark Debald, Transportation Program Administrator

Emily Dozier, Senior Planner

Tara Grogan, Planner

